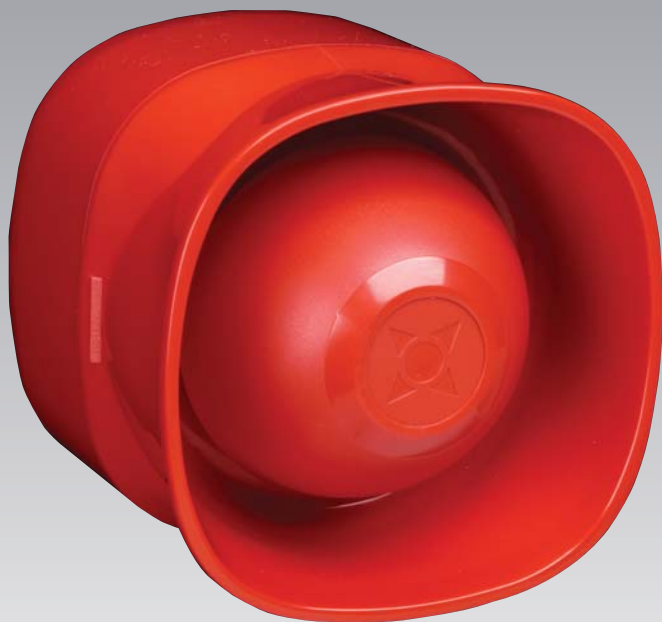


Fire



Weatherproof version

DATA
SHEET

Analogue Sounder

CAS381 / CAS381WP

MAS850LPS / MAS850LPSWP

FXN538LPS / FXN538LPSWP

COOPER

This range of loop-powered addressable wall sounders offers a highly efficient, low current sounder option.

Sounder volume and tone are set at the analogue panel avoiding the need to access each sounder individually to alter settings.

Benefits and Features

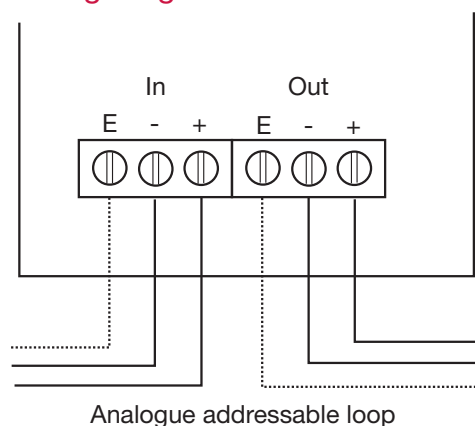
- > Loop powered
- > High efficiency design
- > Selectable tones controlled by the panel
- > Adjustable volume controlled by the panel
- > Simple clip fixing assembly



Technical Specifications

Model	CAS831 / MAS850LPS / FXN538LPS	CAS831WP / MAS850LPSPWP / FXN538LPSPWP
Description	Analogue sounder	
Standards	EN54: Pt 3; 2000 + A1 2002	
CPD approval	0832CPD0155	0832CPD0156
Operating voltage	17 to 32V dc	
Tones (set by panels)	Continuous: 910 Hz Pulsed: 910 / 0 Hz @ 1 Hz Two tone: 644 / 984 Hz @ 1 Hz cycle Slow whoop 500-1200 Hz in 3.5 sec / 0.5 sec gap	
Sound output +/- 3 dB (set by panel)	Low volume: 87 dB Medium volume: 93 dB High volume: 100 dB	
Current consumption	Low volume: <2 mA, Medium volume: <3 mA, High volume: <6 mA	
Standby current	<320µA	
Environmental	IP42. -10°C to +55°C (95% RH)	IP66. -10°C to +55°C (95% RH)
Physical		
Construction	ABS	
Colour	red	
Dimensions (H x W x D)	105mm x 105mm x 95mm	108mm x 108mm x 103mm
Weight	0.25kg	0.57kg
Compatibility	Analogue addressable fire systems	

Wiring Diagram



Product Codes

Analogue sounder	CAS831 / MAS850LPS / FXN538LPS
Analogue sounder - weatherproof	CAS831WP / MAS850LPSPWP / FXN538LPSPWP

Cooper Lighting and Safety

Wheatley Hall Road, Doncaster, South Yorkshire DN2 4NB

www.cooperfire.com

Sales

T: +44 (0)1302 303 999
 F: +44 (0)1302 303 333
 E: sales@cooperfire.com

Technical

T: +44 (0)1302 303 350
 F: +44 (0)1302 303 332
 E: techsupport@cooperfire.com

Export

T: +44 (0)1302 303 344
 F: +44 (0)1302 303 345
 E: export@cooperfire.com