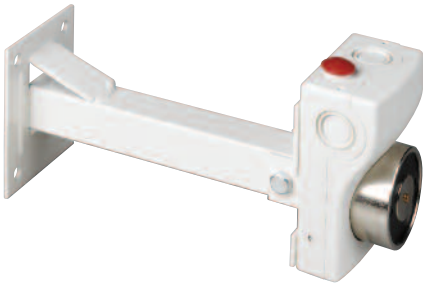


Compact Door Retainer FX021240LC and FX02124VLC



floor/wall mounting bracket



compact door retainer



door striker plate

Overview

JSB compact magnetic door retainers are competitively priced, simple to install and discreetly styled.

They are ideal for a wide range of applications, such as nursing homes, hospitals and busy corridors. They enable doors to be held open under normal conditions but automatically be released in the event of fire alarm activation.

Features

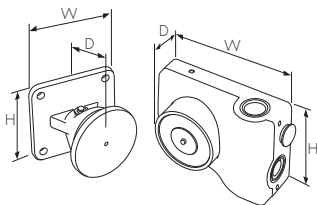
- Fast fit clip on cover
- Mains and 24V dc versions available
- Manual release facility
- Optional floor mounting bracket available

Benefits

- Quick and simple to install
- Slim profile unit

Conventional Compact Door Retainer - FX021240LC and FX02124VLC

Dimensions



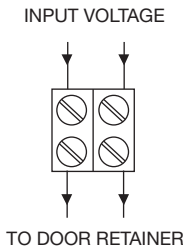
Description	H (mm)	W (mm)	D (mm)
Magnet	71	108	44
Striker Plate	65	65	48

Technical Specification

Code	FX021240LC	FX02124VLC
Description	Mains powered compact door retainer	24V dc powered compact door retainer
Specification		
Operating Voltage	230 V ac to 240 V ac	24V dc
Power Consumption	1.2 VA	40mA
Holding Force	45 kg	40 kg
Environmental		
Operating Temperature	-5°C to +54°C	-5°C to +40°C
Humidity (Non Condensing)	0 to 93 %RH	0 to 93 %RH
Physical		
Construction	PC/ABS	PC/ABS
Colour	White	White
Dimensions (H x W x D)		
Magnet	71mm x 108mm 44mm	71mm x 108mm 44mm
Striker Plate	65mm x 65mm x 48mm	65mm x 65mm x 48mm
Weight	1.0 kg	1.0 kg
Ingress Protection	IP42	IP40
Compatibility		
Suitable for use with	JSB conventional fire systems	JSB conventional fire systems

Standard Connection

FX021240LC / FX02124VLC



WARNING:
Do NOT use high voltage testers if ANY equipment is connected to the system.

Installation

1. Door retainer unit and striker plate should be fixed to a smooth surface.
2. 16mm & 20mm cable entry facilities are provided at the top and both sides.
3. 10mm cable entry is provided at the rear
4. Fixings should be able to support at least double the holding force of the magnet.

System Functionality

1. Designed to operate only with self closing doors.
2. Door retainer is fitted to wall or floor using floor bracket.
3. Striker plate is fitted to door.
4. Door retainer is fed with a constant supply via an external control device.
5. Supply energises an electromagnet, which holds the striker plate securely against the magnet.
6. If supply to magnet is interrupted, magnet de-energises.
7. Door closes under control of its own self closing device.

Product Codes

Code	Description
FX021240LC	Conventional mains powered compact door retainer
FX02124VLC	Conventional 24V dc compact door retainer
FX021LCFB	Floor mounting bracket for compact door retainer
FASP0429	24V dc power supply