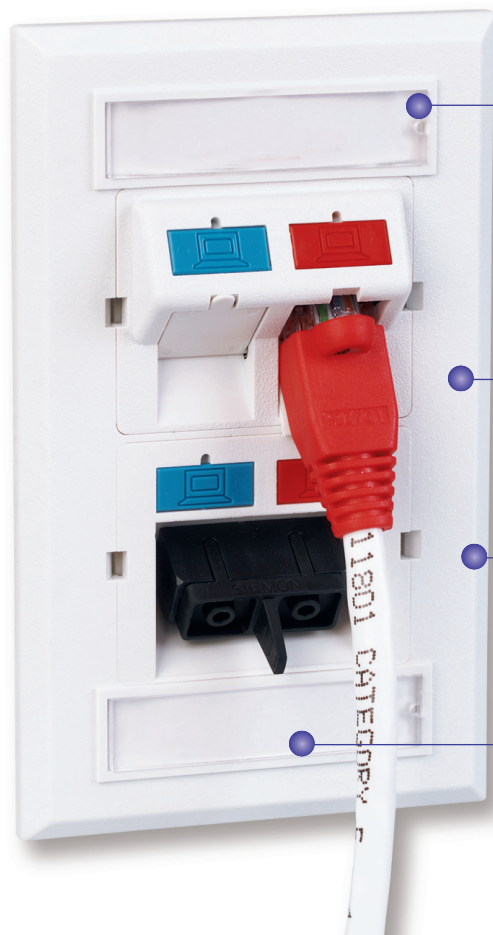


CT Faceplates

At the work area, Siemon CT faceplates offer a sleek, clean appearance for mounting CT couplers. Designation labels cover the mounting screws (included) and provide ample circuit identification.



PATENTED

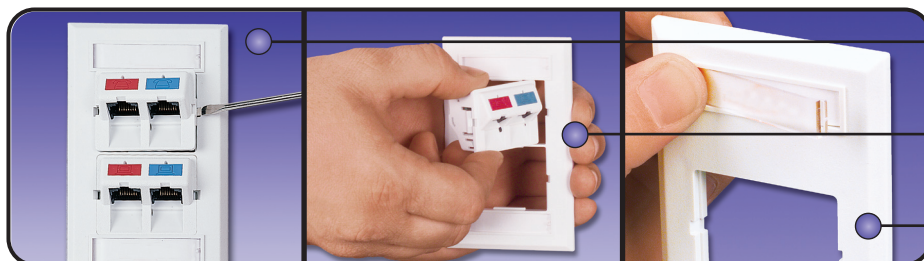


Write-on circuit designation labels protected by clear plastic cover conceal the mounting screws

Faceplates and CT couplers are available in a wide range of colors. Stainless steel versions are also available

UV resistant, high impact plastic prevents color fading and provides added durability

Sheets of designation labels can be ordered for use with desktop printers



Couplers can be easily snapped out of the front of the faceplates, making moves, adds, and changes quick and easy

Cutouts allow couplers to pass through plates enabling mounting of faceplates after cables are terminated

Faceplates include quick pressure-release designation label covers for quick, tool-less removal

ORDERING INFORMATION

CT Faceplates:



CT2-FP-(XX)
Single gang plastic
faceplate for one coupler



CT4-FP-(XX)
Single gang plastic
faceplate for two couplers



CT8-FP-(XX)
Double gang plastic
faceplate for four couplers



CT2-HFPA-(XX)*
Single gang plastic
horizontal faceplate for one
coupler with screw caps
(#6-32 screws)

Use (XX) to specify color: 01 = black, 02 = white, 04 = gray, 20 = ivory, 80 = light ivory

Faceplates include designation label(s), clear label cover(s) and mounting screws

Ⓑ Add "B" to end of part number for bulk project pack, (includes 100 CT2 or CT4 faceplates or 50 CT8 faceplates, screws, designation labels and label covers).

*Not available in bulk project pack

Stainless Steel CT Faceplates:



CT4-FP-SS-L
Single gang stainless steel
faceplate for two couplers
with labels and label
holders



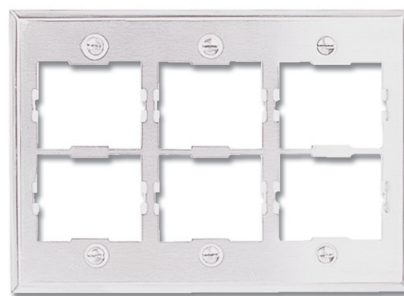
CT8-FP-SS-L
Double gang stainless steel
faceplate for four couplers
with labels and label
holders



CT4-FP-SS
Single gang stainless steel
faceplate for two couplers



CT8-FP-SS
Double gang stainless steel
faceplate for four couplers



CT12-FP-SS
Triple gang stainless steel
faceplate for six couplers

ORDERING INFORMATION

British CT Faceplates:

The CT series British faceplates are compatible with British standards (85mm x 85mm) and are designed to work with our complete line of CT couplers.



CTE2-FP-(XX)
Single gang British style
faceplate for one coupler



CTE4-FP22-(XX)
Single gang British style
faceplate for two couplers



CTE4-FP-(XX)
Double gang British style
faceplate for two couplers

Use (XX) to specify color: 02 = white, 82 = alpine white

International CT Faceplates:



CT-FP-DKIT-(XX)
Single gang German
faceplate kit for one coupler.
Includes faceplate, mounting
ring and stand-off frame



CT2-HFP(X)-(XX)
Horizontal Australian/Italian
faceplate for one coupler

Use (X) to specify mounting screws: Blank = M3.5 x0.6x25mm Phillips, Z = M3.5x0.8x32mm Phillips

Use (XX) to specify color: 02 = white, 80 = light ivory

International CT Adapters:



CTE-A-(XX)
50mm x 50mm adapter
for one coupler



CTE-45-(XX)
45mm x 45mm adapter
for one coupler



Use (XX) to specify color: 02 = white, 82 = alpine white

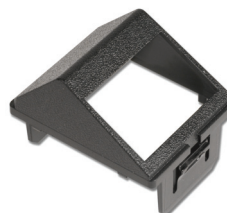
TERA®-MAX® Adapters for CT Faceplates:



CTE-MXA-01-(XX)*
Angled CT adapter for one
UTP MAX module or
TERA outlet



CTE-MXA-02-(XX)*
Angled CT adapter for two
UTP MAX modules or
TERA outlets



CTE-HZA-02-(XX)*
Horizontal CT adapter for two
UTP MAX modules or
TERA outlets



Use (XX) to specify color:
01 = black, 02 = white

Use (XX) to specify color: 02 = white, 20 = ivory

*Not compatible with screened MAX modules

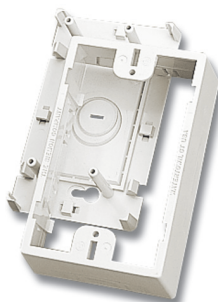
*Not compatible with screened MAX modules

ORDERING INFORMATION

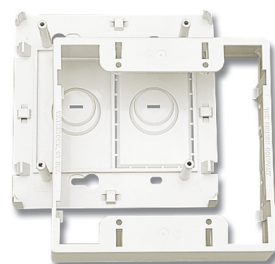
Faceplate Surface Mount Boxes:

These boxes offer a surface mounting option for CT single and double gang faceplates. These boxes are perfect for installations where the work area outlet cannot be recessed into a wall or floor box. Mounting hardware not included.

CT4-BOX-(XX)
Surface mount box for one
single gang CT faceplate
height: 119.3mm (4.70 in.),
width: 74.8mm (2.95 in.),
depth: 40.6mm (1.60 in.)



CT8-BOX-(XX)
Surface mount box for one
double gang CT faceplate
height: 119.3mm (4.70 in.),
width: 120.8mm (4.76 in.),
depth: 40.6mm (1.60 in.)



Use (XX) to specify color: 01 = black, 02 = white, 04 = gray, 20 = ivory, 80 = light ivory

British Faceplate Surface Mount Boxes:

CTE2-BOX-02
Single gang surface
mount box
for British CT faceplates,
white

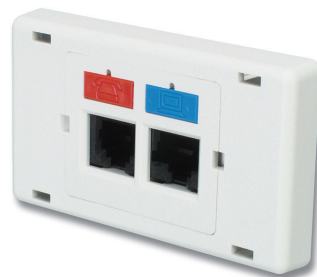


CTE4-BOX-02
Double gang surface
mount box
for British CT faceplates,
white



CT Modular Furniture Adapters:

CT-MFP-(XX)Standard adapter (accepts one CT coupler)
CT-MFP-KNL-(XX)*Adapter for Knoll Group openings (accepts one
CT coupler)
CT-MFP-HME-(XX)*Adapter for Herman Miller Ethospace Beltline
openings (accepts one CT coupler)
CT-MFP-HMA-(XX)Adapter for Herman Miller Series 2 & Ethospace
Base openings (accepts two CT couplers)
CT-MFP-AO3-(XX)Adapter for Herman Miller Action Office Series
3 base opening (accepts one CT coupler)



Use (XX) to specify color: 01 = black, 02 = white, 04 = gray, 20 = ivory,
80 = light ivory

*Not available in white or ivory

Because we continuously improve our products, Siemon reserves the right to
change specifications and availability without prior notice.

TERA® and MAX® are trademarks of Siemon

For related product information request Spec Sheet(s):

CT 5e Couplers (PROD-SS-CT5)
CT 6 Couplers (PROD-SS-CT6)
TERA® Outlets (PROD-SS-TRO)
MAX® 6 UTP Modules (PROD-SS-MX6)
MAX 5e UTP Modules (PROD-SS-MX5)
MAX 5e F/UTP Modules (PROD-SS-MX5S)

For additional resource information:

Visit our web site at www.siemon.com

Worldwide Headquarters North America

Watertown, CT USA
Phone (1) 860 945 4200 US
Phone (1) 888 425 6165

Regional Headquarters EMEA

Europe/Middle East/Africa
Surrey, England
Phone (44) 0 1932 571771

Regional Headquarters Asia/Pacific

Shanghai, P.R. China
Phone (86) 21 5385 0303

Regional Headquarters Latin America

Bogota, Colombia
Phone (571) 657 1950